



# Label Printing Installation Guide

---

**Copyright Notice**

CareEvolve, 200 Riverfront Dr, NJ 07407

Copyright © 2019 CareEvolve. All rights reserved.

This document is protected by the copyright laws as an unpublished work.

## **Overview**

CareEvolve can be used to print specimen labels to stand-alone label printers. CareEvolve recommends the DYMO LabelWriter 450.

Before the system can create these labels, you must:

- Have local administrator rights to the machine for installation
- Contact Lab Support:
  - Provide them with the **location name** and **code**
  - Request that the location's Requisition Labels Type be changed to **Label Printer**
- [Download and install the DYMO printer drivers](#)
- [Download and install software from the CareEvolve application](#)
- [Confirm printer is set to landscape](#)
- [Test the printer](#)

## Download and Install the Printer Drivers for your Label Printer

### Printer and Label Details

- Dymo LabelWriter 450 or higher
- Dymo 30336 Multipurpose Labels - 1" x 2-1/8", 500 Labels/Roll, 1 Roll/Box

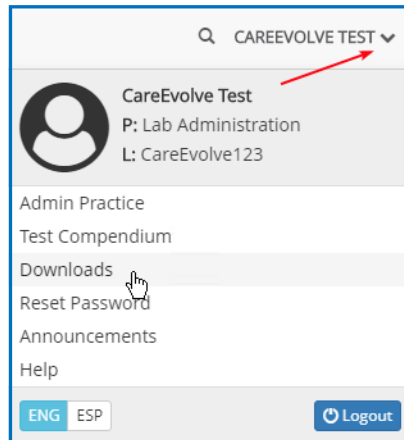
### Dymo Printers

- Go to <http://www.dymo.com> and click on the Support tab.
- Under Drivers and Downloads, click the 'click here' link and search for your printer.
- Find the drivers link and then follow the instructions for your printer and operating system on your computer.

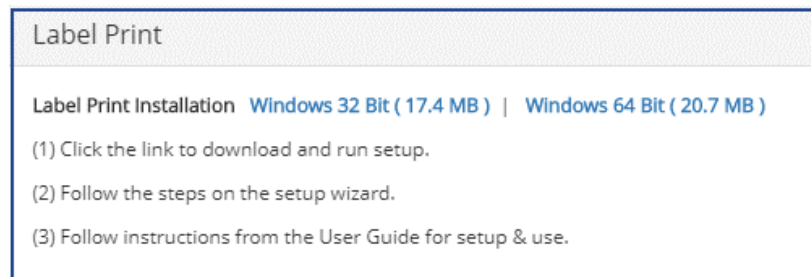
## Download Software from CareEvolve

Login to the application as a practice administrator and follow these steps to download the label printing software from the CareEvolve application onto the PC.

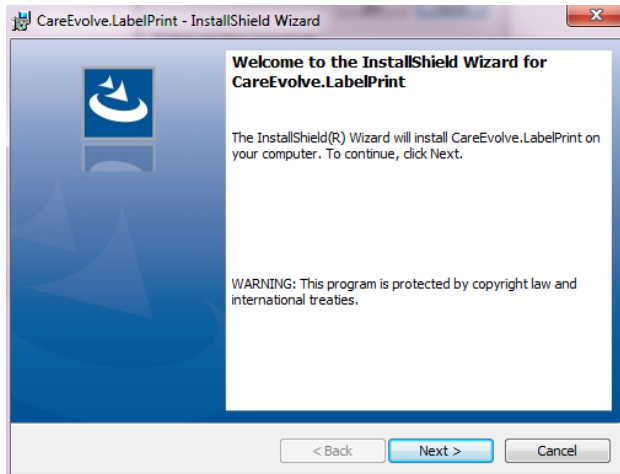
1. Hover over or click the arrow next to the user's name. Click the **Downloads** link.



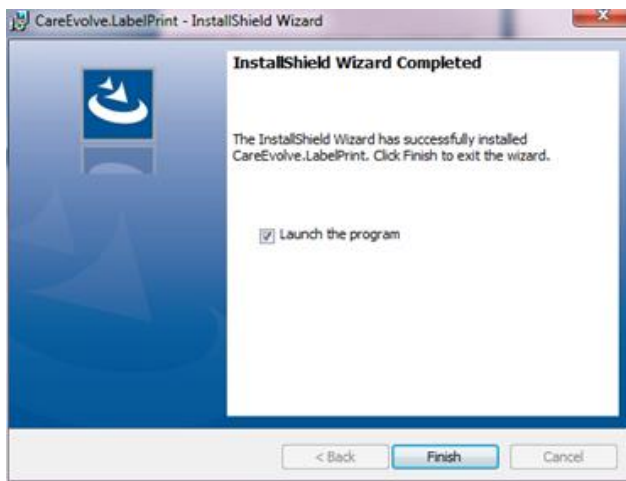
2. Select the **Label Print Installation** link appropriate for the machine.



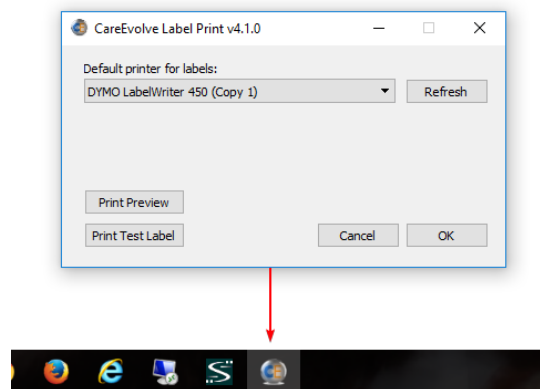
3. The software will download to your machine. Open the file either from the Downloads folder or from the on-screen prompt.
4. Click **Next** three times.



5. Click **Finish**.



6. The program will open. (May appear minimized.) Select the default printer and click OK.

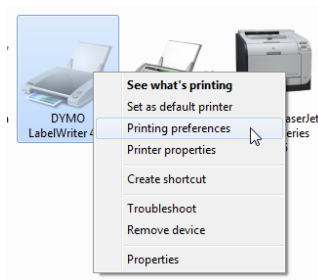


## Confirm Printer Preferences

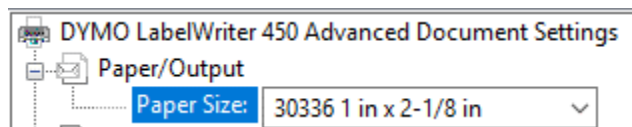
Your label printer must be set to print in landscape orientation and have the 30336 label size selected.

Follow the steps below to confirm the setting.

1. Click **Start > Control Panel > Printer**
2. Right-click on the label printer in the list and click on **Printing preferences**.



3. Confirm that the orientation is set to **Landscape**.
4. Click the **Advanced** button.
5. Select label size **30336 1 in x 2-1/8 in**



## Testing the Printer

1. **Login** to the CareEvolve application and select a patient.
2. Create a **new order** for the patient.
3. Complete the order.
4. The order modal window will open. Select the label printer and click the **Print** button.